



Roxtec C LH Gennemføring

Letvægts gennemføring til fastboltning til strukturen.

Roxtec C LH er en kompakt og let, men meget stærk tætningsløsning til multikabel- og rørgennemføring - den findes i fem forskellige størrelser. Rammen er produceret i aluminium og fastgøres til strukturen ved boltning. Modulerne kan tilpasses kabler og rør af forskellig størrelse og kan bruges til indbygget reservekapacitet i gennemføringen. Løsningen beskytter mod vandindtrængning, brand og vibrationer og er ideel til montering i gulve og vægge i transportsektoren som f.eks. rullende materiel.



- Letvægt
- Pladsbesparende
- Har indbygget reservekapacitet

Produktegenskaber



Brandklassificeret



IP/UL NEMA

Byggekonstruktion



El-skabe og kabinetter



Metal

Monteringstype



Boltning

Normeringer og certifikater

Brand

- E/EI-klassificering i henhold til EN 45545 E30
- HL3 i henhold til EN 45545-2 (R22, R23)

Tæthed

- IP 66 i henhold til IEC 60529

Understøtter

- Stød og vibration kategori 2 i henhold til IEC 61373

Rammedimensioner

mm/kg

De nedenstående rammevarianter udgør et begrænset udvalg. Du kan se hele udvalget af rammer og konfigurationer på [roxtec.com](https://www.roxtec.com).

Title	Rammeåbninger	Pakkeareaö	Udvendige mål WxHxD	Åbningsmål w x h	Vægt	Art.-nr.
C LH 3x1 ALU	1	60 x 120	120.2 x 218.5 x 30	76(+1/-1) x 174.5(+1/-1)	0.59	234431
C LH 4x1 ALU	1	120 x 120	180.2 x 218.5 x 30	136(+1/-1) x 174.5(+1/-1)	0.68	234434
C LH 5x1 ALU	1	60 x 180	120.2 x 276.5 x 30	76(+1/-1) x 232.5(+1/-1)	1	234432
C LH 6x1 ALU	1	120 x 180	180.2 x 276.5 x 30	136(+1/-1) x 232.5(+1/-1)	1	234435
C LH 7x1 ALU	1	60 x 240	120.2 x 336.5 x 30	76(+1/-1) x 292.5(+1/-1)	0.72	234433

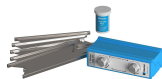


Data om tætningskomponenter

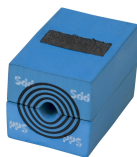
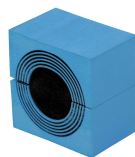
Tætningskomponenter



Lubricant Blue



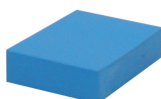
C-Wedge og Wedgekit

CM PPS-modul med
Multidiameter™CM-modul med
Multidiameter™

C-Stayplate



holderværktøj



CM blindmodul

Tilbehør

For mere information, besøg venligst [roxtec.com](https://www.roxtec.com).

The product information provided by Roxtec does not release the purchaser of the Roxtec system, or part thereof, from the obligation to independently determine the suitability of the products for the intended process, installation and/or use.

Roxtec gives no guarantee for the Roxtec system or any part thereof and assumes no liability for any loss or damage whatsoever, whether direct, indirect, consequential, loss of profit or otherwise, occurred or caused by the Roxtec systems or installations containing components not manufactured by an authorized manufacturer and/or occurred or caused by the use of the Roxtec system in a manner or for an application other than for which the Roxtec system was designed or intended.

Roxtec expressly excludes any implied warranties of merchantability and fitness for a particular purpose and all other express or implied representations and warranties provided by statute or common law. User determines suitability of the Roxtec system for intended use and assumes all risk and liability in connection therewith. In no event shall Roxtec be liable for indirect, consequential, punitive, special, exemplary or incidental damages or losses.

The Roxtec products are offered and sold in accordance with the conditions of the Roxtec General Terms of Sales. The latest version of the Roxtec General Terms of Sales can be downloaded from <https://www.roxtec.com/en/about-us/about-roxtec/general-terms-of-sales/>

We reserve the right to make changes to the product and technical information without further notice. Any errors in print or entry are no claims for indemnity. The content of this publication is the property of Roxtec International AB and is protected by copyright.

This document was generated on: 2026-05-12

